

# MONTHLY MEMBERSHIP PROGRESS REPORT

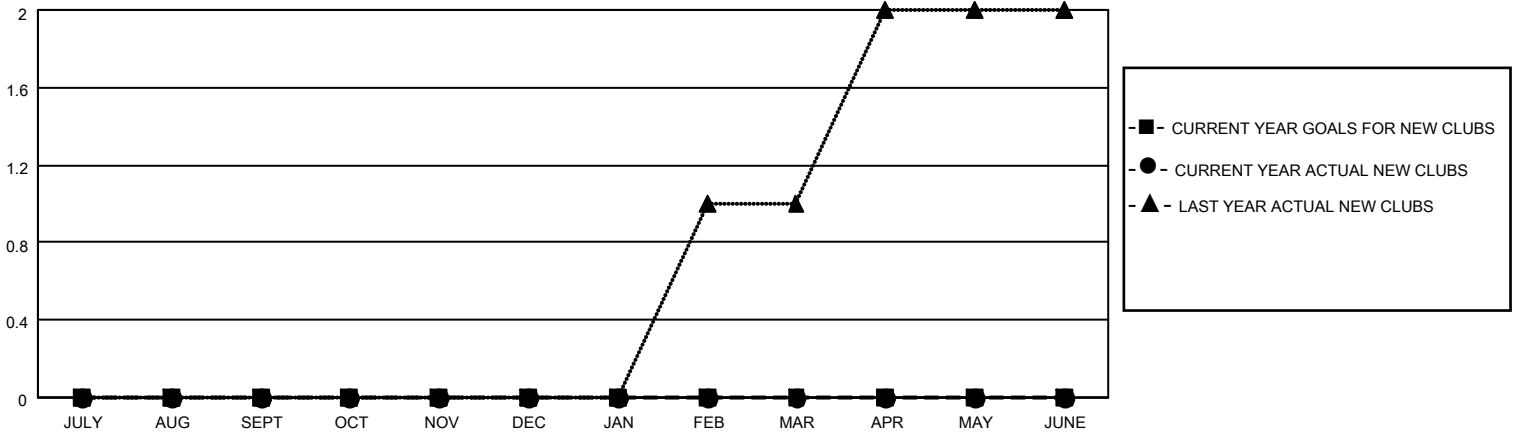
LOCATION NEW ZEALAND

District 202 K

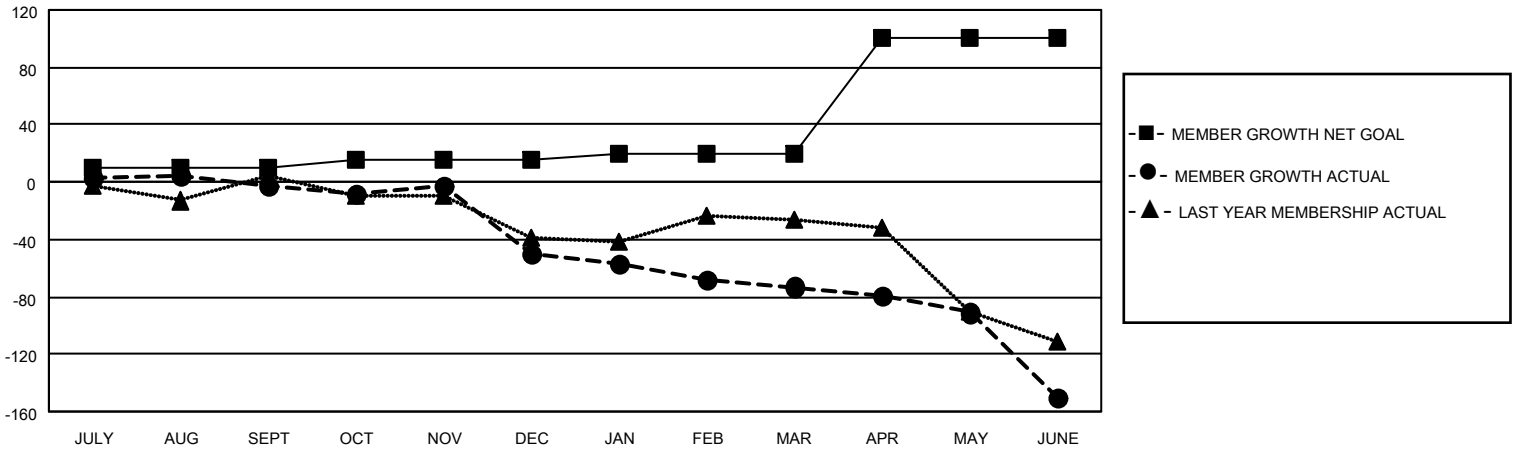
Results as of: 6/30/2022

Clubs				Members			
RESULTS FOR 2021-2022				RESULTS FOR 2021-2022			
QUARTER	NEW CLUB GOAL	NEW CLUBS	DROPPED CLUBS	QUARTER	MEMBER GROWTH NET GOAL	MEMBER GROWTH ACTUAL	DROPPED MEMBERS ACTUAL (including transfers)
JULY/AUG/SEPT	0	0	1	JULY/AUG/SEPT	10	27	20
OCT/NOV/DEC	0	0	1	OCT/NOV/DEC	5	28	68
JAN/FEB/MAR	0	0	3	JAN/FEB/MAR	5	13	31
APR/MAY/JUNE	0	0	1	APR/MAY/JUNE	80	38	103

**GOALS AND ACTUAL NEW CLUBS CUMULATIVE**



**GOALS AND ACTUAL MEMBERS CUMULATIVE**



**DROPPED CLUBS: 6**

**31 CLUBS OF 67 ADDED 1 OR MORE NEW MEMBERS**

**GENDER DISTRIBUTION**

MALE	742 (63.47%)
FEMALE	427 (36.53%)
NON BINARY	0 (0.00%)
PREFER NOT TO ANSWER	0 (0.00%)

**DROPPED MEMBERS**

[CLICK HERE FOR CUMULATIVE MEMBERSHIP DATA](#)

DECEASED	20
CLUB CANCELLED	4
OTHER	198
<b>TOTAL</b>	<b>222</b>

TOTAL FAMILY UNIT MEMBERS	208
FAMILY MEMBERS PAYING HALF DUES	106